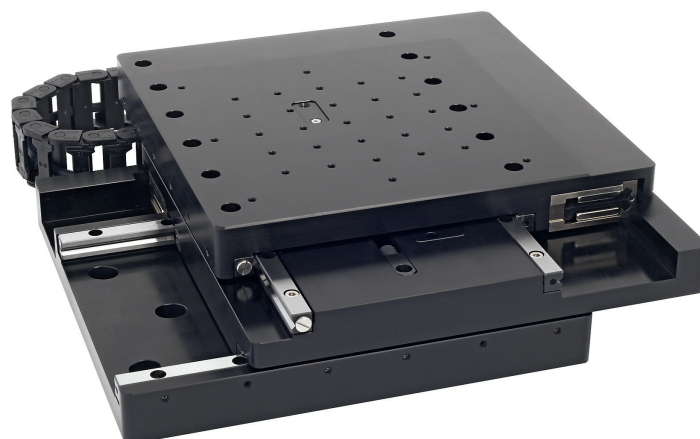


Planar XY Linear Stage

8MTL120XY

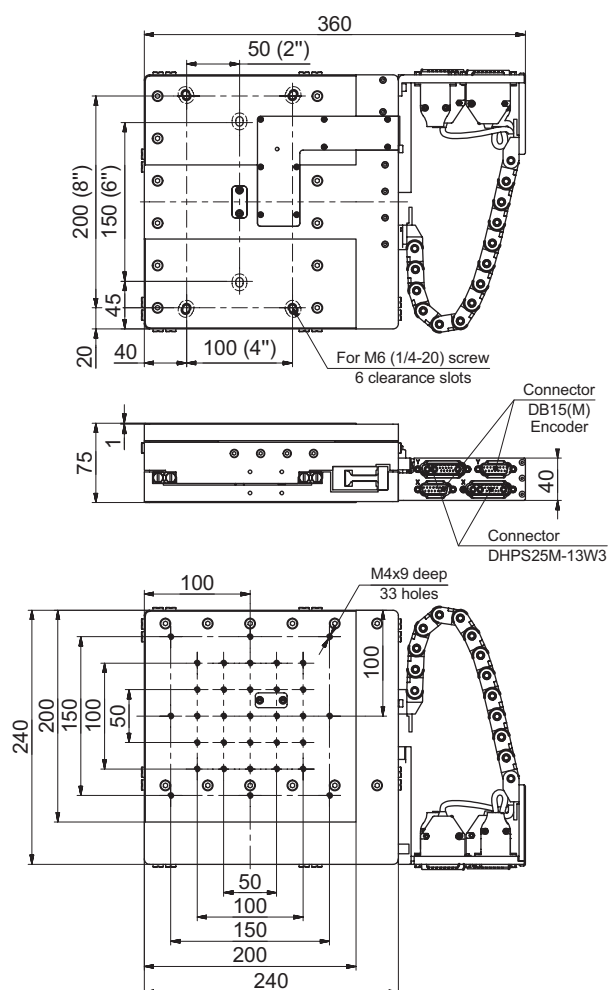
FEATURES

- Direct drive zero backlash system
- High resolution non-contact optical incremental encoder
- Integrated, low-profile, XY, linear motor stage
- High accuracy linear guide with crossed roller bearings, anti-creep
- Easy integration with metric/imperial opto-mechanical systems
- 5 arcsec orthogonality
- All measurement reports are included by default



SPECIFICATIONS

Parameter	Value
Travel range	120 × 120 mm
Motor	Linear Ironless BLDC
Encoder type	Optical
Encoder resolution	any of the range: 25 nm to 5 µm
Bi-directional repeatability	(peak to peak) ± 0.15 µm
Bi-directional repeatability (RMS)	± 0.10 µm
Absolute accuracy	
before calibration	± 4.00 µm
after calibration	± 0.5 µm
Maximum velocity (load 4kg)	< 1 000 mm/s
Maximum acceleration (load 4kg)	< 20 000 mm/s ²
Load capacity (centrally placed)	30.00 kg
Recommended controllers	8SMC5-USB series or ACS Products Line



MOTORIZED PLANAR XY LINEAR STAGE

www.standa.LT

Manufacturer of Opto-Mechanical equipment for research, industry and education

Standa Ltd.
P.O.Box 377
LT 03012 Vilnius
LITHUANIA
Phone: +370-5-2651474
Fax: +370-5-2651483
E-mail: sales@standa.LT

